

How To Configure P6 R8.1 Enterprise Project Portfolio Management For LDAP Authentication [ID 1340406.1]

Modified: 17-Jul-2012 Type: HOWTO Status: PUBLISHED Priority: 3

In this Document

[Goal](#)

[Fix](#)

[Configuring LDAP and Provisioning LDAP user information](#)

[Configuring P6 Optional Client Internal Plug-ins for Authentication](#)

[Configuring P6 Progress Reporter for Authentication](#)

Applies to:

Primavera P6 Enterprise Project Portfolio Management - Version 8.1 to 8.2 [Release 8.1 to 8.2]

Information in this document applies to any platform.

Goal

The purpose of this document is to describe the steps necessary to configure P6 r8.1 EPPM for LDAP authentication. This includes configuring P6 8.*, P6 Progress Reporter and P6 Optional Client.

Fix

LDAP (Lightweight Directory Access Protocol) is directory-based authentication and is available for all P6 EPPM applications. In this mode, when a user attempts to log into a P6 EPPM application, the user's identity is confirmed in an LDAP-compliant directory server database. Additionally, P6 EPPM supports the use of LDAP referrals with Oracle Internet Directory and Microsoft Windows Active Directory. Referrals chasing allows authentication to extend to another domain.

Regardless of the authentication scheme you choose, the P6 EPPM database controls user authorization.

For Oracle Internet Directory, referrals chasing only works when the directories are configured to allow anonymous searches. If P6 EPPM is configured for LDAP authentication, all P6 Professional tools (e.g., Update Baseline, Schedule Comparison or Claim Digger) or other Oracle Primavera applications that use P6 Integration API must be separately configured for Single Sign-On or LDAP authentication using the API AdminApp java utility.

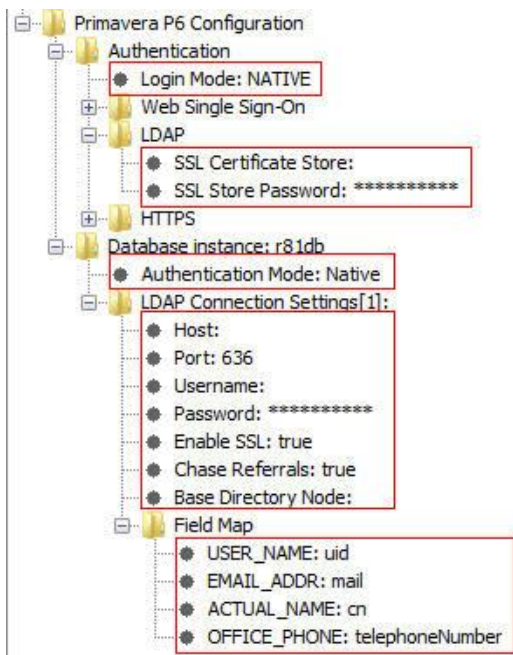
A configuration for P6 might include database instances that are not set to the same authentication mode as the P6 server. If a user connects and requests a database that is set to a different authentication mode than the P6 server, an error message displays; the user must select a database that matches the authentication mode set for the P6 server.

Configuring LDAP and Provisioning LDAP user information

Before configuring LDAP:

1. Ensure that all users are logged out of P6 EPPM to avoid a reset of the P6 Administrator application settings.
2. Verify which global profile is set as the default since this will be assigned to all provisioned users.

1. Log into P6 as a user with privileges to create a new user.
2. Add a new user (in Native mode) that exactly matches an LDAP server user.
3. Assign the new user the Admin Superuser role within P6.
4. Log into the P6 Administrator application as an admin superuser account (<http://<server>:<port>/p6/admin.jsp>)
5. Populate the LDAP configuration settings such as Login Mode, Authentication Mode, SSL settings, connection details and field mappings:



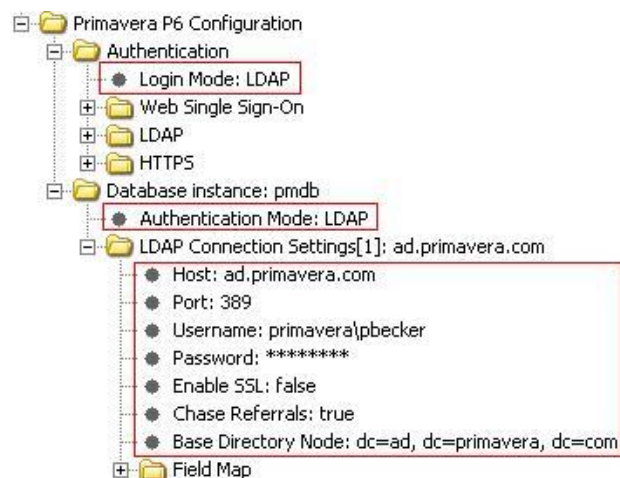
Authentication Settings	Description
Login Mode	Determines the page that will display for logging into P6. Must be set to the same value chosen for Authentication Mode for the database instance.
LDAP/SSL Certificate Store	The full path to the keystore that holds the SSL certificate for the LDAP server.
LDAP/SSL Store Password	The password for the keystore that holds the SSL certificate.

LDAP Connection Settings	Description
Authentication Mode	<p>The authentication method used for the database instance. Must be set to the same value chosen for Login Mode.</p> <p>Note: If Native or LDAP is selected, both P6 and P6 Professional are set to that value. If SSO is selected, P6 will be set to SSO and P6 Professional will be set to LDAP.</p>
LDAP Connection Settings/Host	The connection string for the LDAP server
LDAP Connection Settings/Port	The port number for the LDAP server connection
LDAP Connection Settings/Username	<p>The name used to search the Base Directory Node. Must be specified if the LDAP server does not allow anonymous searches.</p> <p>Note: Must be fully qualified (for example, uid=admin)</p>
LDAP Connection Settings/Password	The password of the name used to search the Base Directory Node.
LDAP Connection Settings/Enable SSL	If false, will not connect to LDAP server using SSL
LDAP Connection Settings/Chase Referrals	Chasing Referrals allows authentication to extend to another domain. If set to false, searches will be performed only in the domain specified. Referral chasing is supported with Oracle Internet Directory and Microsoft Windows Active Directory.

	Note: For Oracle Internet Directory, referrals chasing only works when the directories are configured to allow anonymous searches.
LDAP Connection Settings/Base Directory Node	Specifies the location in the directory information tree in which to start searches.

LDAP Field Mapping Settings	Description
LDAP/Field Map/USER_NAME	The name of the LDAP directory field that maps to the P6 USER_NAME field
LDAP/Field Map/EMAIL_ADDR	The name of the LDAP directory field that maps to the P6 EMAIL_ADDR field
LDAP/Field Map/ACTUAL_NAME	The name of the LDAP directory field that maps to the P6 ACTUAL_NAME field
LDAP/Field Map/OFFICE_PHONE	The name of the LDAP directory field that maps to the P6 OFFICE_PHONE field

6. Click Save Changes



7. Restart the application server instance.

If you do not restart the application server instance, the settings will be restored to the previous configuration after the next step.

8. Log into P6 as the LDAP user created in step 2.

9. On the Users page, click the Add icon. The Add Users from LDAP dialog box appears for you to provision users from the LDAP repository:



You must have the Add/Edit/Delete Users privilege and the Provision Users from LDAP privilege to search the LDAP directory. You do not need the Provision Users from LDAP privilege to import users from an LDIF file.

10. Either click the Load LDIF button, or enter an LDAP query (for example, uid=*) under Search users. If a search

was previously performed by a user with the privilege to search the LDAP directory, the last query entered by that user will appear.



11. If you clicked the Load LDIF button, browse to the location of the LDIF file, and click Open. If you entered an LDAP query, click Search.

Depending on your P6 administrative configuration settings, you might be prompted to log into the LDAP server.

12. A list of users will appear, grouped by status. For example, LDAP repository users that do not exactly match P6 EPPM users will be grouped together. If users exist in the LDAP repository, the User Name, Actual Name, E-mail, and Phone fields are populated (if you previously mapped those fields through the P6 Administrator application settings).

The User Name field is equivalent to the Login Name field in P6. The Actual Name field is equivalent to the Personal Name field.

13. Select the option next to each user account that you wish to import, or select the option in the fields bar to select all users. New and modified users are automatically selected.

14. Click Import

The Import Option is active only if the database has previously been configured for either LDAP or Single Sign-On mode.
The new users will be assigned the default global profile.

When you provision users, changed records are updated in the P6 EPPM database and new users are added. However, users that have been deleted from the LDAP directory or LDIF file are not automatically removed from the P6 EPPM database. You will need to manually delete these users.

Configuring P6 Optional Client Internal Plug-ins for Authentication

To configure P6 Optional Client Internal Plug-ins for LDAP authentication:

1. In P6 Optional Client, launch an API tool (Update Baseline, Schedule Comparison/Claim Digger, or Export/Import XML) while running in Native mode. This action will copy the BREbootstrap.xml file to the following location, based on your operating system:

Windows XP: %USERPROFILE%\Local Settings\Application Data\Oracle\Primavera P6\P6 Optional Client
Windows Vista and 7: %LOCALAPPDATA%\Oracle\Primavera P6\P6 Optional Client

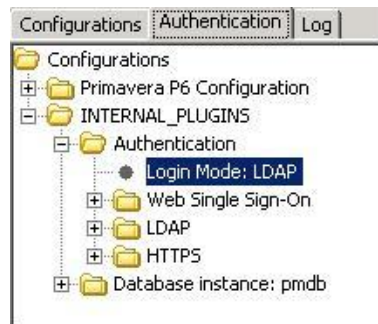
2. On the machine where P6 Optional Client is installed, go to the P6 Optional Client installation location (by default, local drive\Program Files\Oracle\Primavera P6\P6 Optional Client), and open the Java folder.
3. Copy the BREbootstrap.xml file from the folder specified in step 1 to the Java folder.

You will need Write access to the Java folder to perform this step.

4. From the Java folder, run asadmin.cmd to launch the P6 Administrator application.

5. Enter your privuser name and password.
6. Click on the Authentication tab.
7. Set Configurations/INTERNAL_PLUGINS/Authentication/Login Mode to LDAP.

Your authentication settings should match how P6 is configured.



Configuring P6 Progress Reporter for Authentication

Progress Reporter will utilize the same authentication method as is configured for P6 R8.1. No additional steps are required.